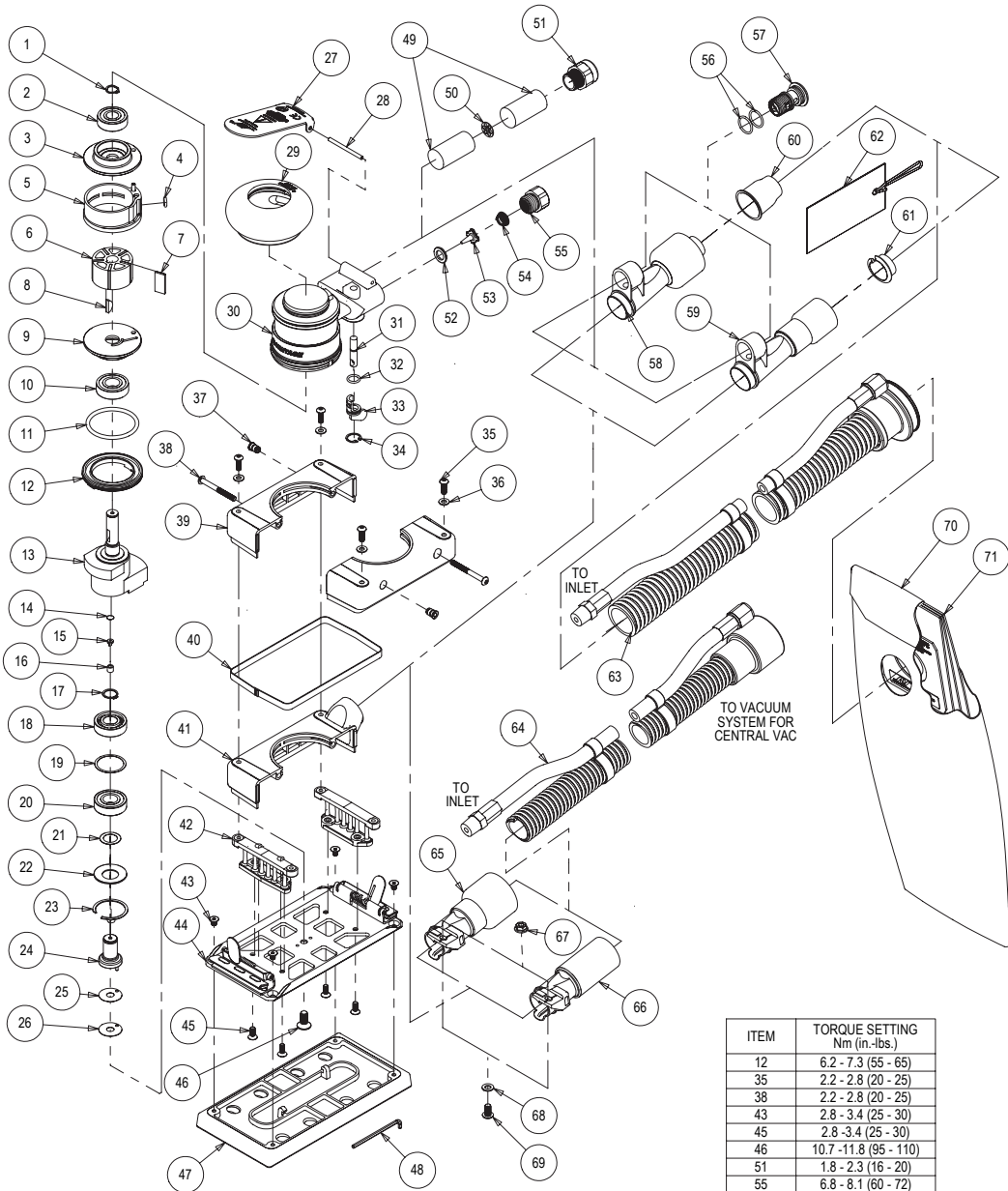


PARTS PAGE



ITEM	TORQUE SETTING Nm (in.-lbs.)
12	6.2 - 7.3 (55 - 65)
35	2.2 - 2.8 (20 - 25)
38	2.2 - 2.8 (20 - 25)
43	2.8 - 3.4 (25 - 30)
45	2.8 - 3.4 (25 - 30)
46	10.7 - 11.8 (95 - 110)
51	1.8 - 2.3 (16 - 20)
55	6.8 - 8.1 (60 - 72)
57	4.0 - 5.4 (36 - 48)
69	3.4 - 3.9 (30 - 35)

Parts List

Item	Part No.	Description	Qty.
1	AVA0040	EXTERNAL RETAINING RING	1
2	AVA0021	BEARING - 2 SHIELDS	1
3	AVA0065	REAR ENDPLATE	1
4	AVA0042	O-RING	1
5	AVA0067	CYLINDER ASSEMBLY	1
6	AVB0005	ROTOR	1
7	AVA0010	VANE	5
8	AVA0041	WOODRUFF KEY	1
9	AVA0064	FRONT ENDPLATE	1
10	AVA0019	BEARING - 2 SHIELDS	1
11	AVA0045	O-RING	1
12	AVA0001	LOCK RING	1
13	AVB0180	SHAFT BAL. (FOR CLAMP STYLE SCREW-ON PAD)	1
13	AVB0204	SHAFT BALANCER FOR SCREW ON PAD	1
14	AVA0122	FILTER	1
15	AVA0121	DUCKBILL CHECK VALVE	1
16	AVA0120	VALVE RETAINER	1
17	AVA0090	RETAINING RING	1
18	AVA0035	BEARING NO SEALS/SHIELDS	1
19	AVA0193	SPACER	1
20	AVA0020	BEARING - 1 SEAL	1
21	AVA0016	SPACER	1
22	AVA0017	BELLEVILLE WASHER	1
23	AVA0018	RETAINING RING	1
24	AVA0113	SPINDLE ASSEMBLY	1
25	AVA0079	SPACER (thin)	Optional
26	AVA0080	SPACER (thick)	1
27	AVA0175	THROTTLE LEVER	1
28	AVA0031	LEVER SPRING PIN	1
29	AVB0007	2 1/2 in. (65 mm) GRIP	Optional
29	AVB0008	2 3/4 in. (69 mm) GRIP	1
29	AVB0009	3 in. (75 mm) GRIP	Optional
30	AVA0230	HOUSING	1
31	AVA0008	VALVE STEM ASSEMBLY	1
32	AVA0043	O-RING	1
33	AVB0014	SPEED CONTROL	1
34	AVA0039	INTERNAL RETAINING RING	1
35	AVA0768	HEX SOCKET BUTTON HEAD MACHINE SCREW	4
36	AVA0076	WASHER	4
37	AVA0071	THREADED INSERT	2
38	AVA0770	HEX SOCKET HEAD CAP SCREW	2
39	AVC0167	NV SHROUD (RH/LH)	2
40	AVA0169	SHROUD SEAL	1
41	AVD0010	CV/SGV SHROUD	1
42	AVC0010	PAD SUPPORT ASSEMBLY	2
43	AVA0766	HEX SOCKET COUNTERSUNK HEAD MACHINE SCREW	4
44	AVC0126	PAD BACKING ASSEMBLY W/TORSION CLAMPS - FOR SCREW ON PADS	1
44	AVC0160	SCREW-ON PAD BACKING	1
45	AVA0767	HEX SOCKET COUNTERSUNK HEAD MACHINE SCREW	4
46	AVA0078	SOCKET FLAT COUNTER SUNK MACHINE SCREW	1
47	NA	1 pad supplied with each tool (type determined by model)	1
48	AVA0864	2.5 mm HEX WRENCH	1
49	AVA0032	MUFFLER INSERT	2
50	AVA0038	MUFFLER PLATE	1
51	AVA0166	MUFFLER HOUSING	1
52	AVA0009	VALVE SEAT	1
53	AVA0007	VALVE	1
54	AVA0014	VALVE SPRING	1
55	AVA0013	1/4-18 NPT INLET BUSHING ASSEMBLY	1
56	AVA0044	O-RING	2
57	AVA0722	SGV RETAINER	1
58	AVA0410	ASSEMBLY FOR 1 in./28 mm HOSE SuperVAC SGV SWIVEL EXHAUST FITTING	1
59	AVA0409	ASSEMBLY FOR 3/4 in./19 mm HOSE SuperVAC SWIVEL EXHAUST FITTING	Optional
60	AVA0778	1 in./28 mm HOSE SEAL	1
61	AVA0854	3/4 in./19 mm HOSE SEAL	Optional
62	AVA0857	3/4 in./19 mm HOSE SEAL TAG W/INSTRUCTION	Optional
62	AVA0933	1 in./28 mm HOSE SEAL TAG W/INSTRUCTION	1
63	AVA0412	Ø 1 in. VAC HOSE TO DOUBLE BAG FITTING AND AIRLINE ASSY	1
63	AVA0411	Ø 3/4 in. VAC HOSE TO DOUBLE BAG FITTING AND AIRLINE ASSY	Optional
64	AVA0300	Ø 3/4 in. VAC HOSE TO Ø 3/4 in. x 1 in./28 mm ADAPTER COUPLING AND AIRLINE ASSM	Optional
65	AVA0092	1 in./28 mm OS SuperVAC CV SWIVEL EXHAUST ASSEMBLY	1
66	AVA0298	OS SuperVAC 3/4 in. CV SWIVEL EXHAUST ASSEMBLY	Optional
67	AVA0048	FLANGED NUT	1
68	AVA0047	WASHER	1
69	AVA0769	HEX SOCKET BUTTON HEAD MACHINE SCREW	1
70	AVA0468	VACUUM BAG	1
71	AVA0470	INSERT FOR VACUUM BAG	1